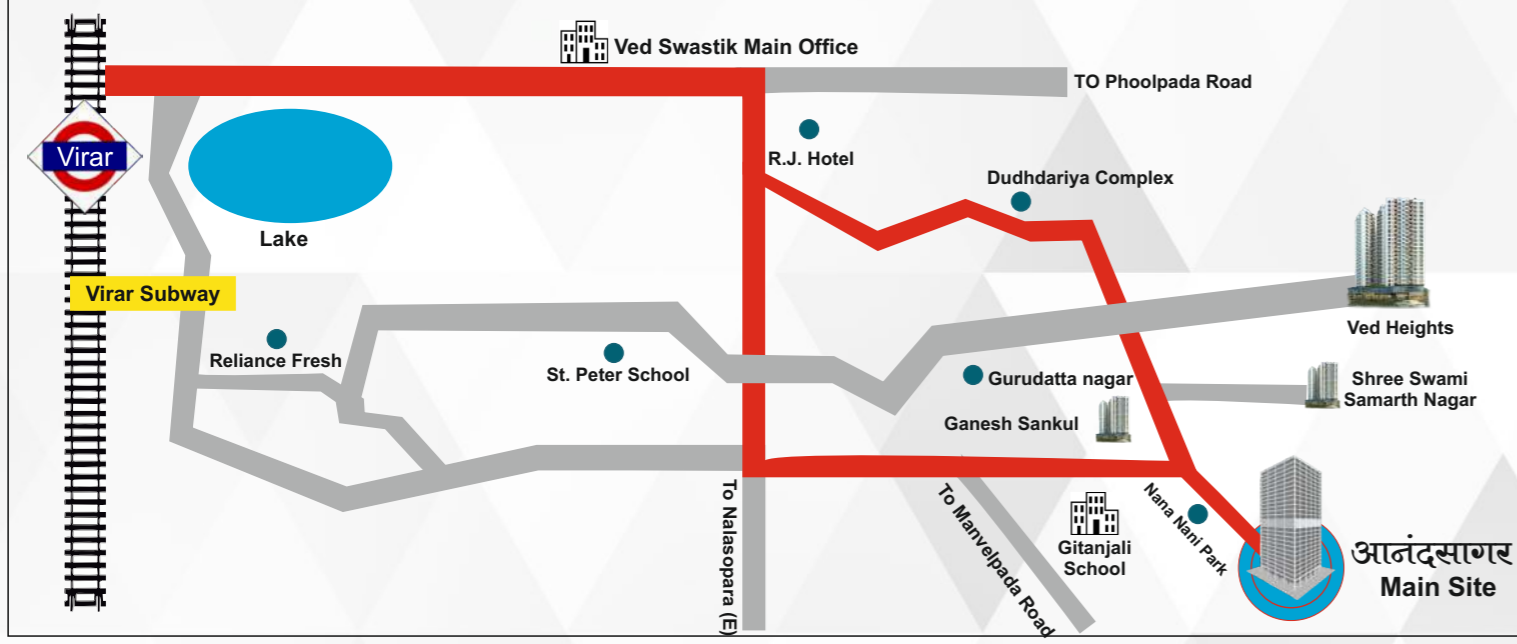


## Location



साईट ऑफिस : स्व. शशिकांत पाटील रोड, गरुदत्त नगरच्या पुढे, नाना-नानी पार्क जवळ, विरार (पुर्व), ता. वसई, जि. पालघर, ४०१ ३०५  
Note: The promoters reserve the rights to change or alter the perspective, amenities, layout whenever required for the betterment of the project.

Previous Project By:



“ श्री स्वामी समर्थ नगर ” “ श्री गुरुदत्त नगर ” “ वेद हार्ट्स ” “ गणेश संकुल ”

Design Architect : EN-CON Architectural & Structural Engineer  
Sethi Place, Ground Floor, Ambadi Road, Vasai(W)

Advocate : Kalpana Mhatre, Virar (W)

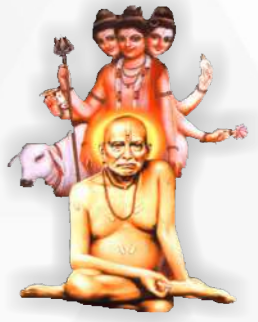
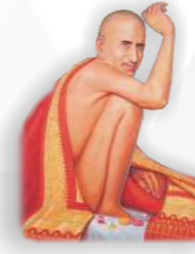
Structural Engineer: Paresh Unnarkar, Virar (W)



वेद ग्रुप

मुख्य कार्यालय

गाळा क्र. ४, ओम वृंदावन को.- ऑप. हौ. सो. लि.,  
चोरघे टॉवरजवळ, फुलपाडा रोड, विरार (पु.)  
०२५०-२५२३१३१



# श्री गजानन महाराज नगर

P99000018063



VVCMC  
Approved



## आनंदसागर

मुख्य कार्यालय: गाळा क्र. ४, ओम वृंदावन को.- ऑप. हौ. सो. लि., चोरघे टॉवरजवळ, फुलपाडा रोड, विरार (पु.)

## About Us



**Ved Group,**  
Brings you to more than Fifteen years of experience in construction And Real Estate Development, In which they have built more than 1000 units. All Projects have temples. But more than anything else **Ved Group** brings a tradition of building, robust & luxurious homes for thousands of families.

## Facilities

1. Generator backup for all lifts & common area as well as in flats i.e. 7 Point.
2. Big landscape Garden.
3. We use TATA STEEL- 500 D.
4. Children's play Area.
5. Shegaon Niwasi Gajanan Maharaj Mandir.
6. Intercom available.
7. All area under the CCTV Surveillance.

## Aminities

### ● **Electrification:**

1. Concealed copper electrical wiring with modular switches.
2. Distribution board with MCB.
3. A.C. point in bedroom.
4. Fall ceiling in living room & moulding patta in bedroom.
5. Reputed Bajaj Company ceiling fan in living room & bedroom. Exhaust fan in kitchen & W.C.
6. CFL bulb in all rooms & decorative centre light & spot light in living room.
7. Dry balcony area in kitchen with washing machine point.
8. Water purifier point.



## Aminities



### ● **Flooring:**

1. Full Ceramic Vitrified flooring 2'x2' in all rooms with skirting.

### ● **Kitchen, Bedroom & Living Room :**

1. Granite Kitchen Platform with S.S. sink & kitchen trolley with kitchen cabinet.
2. Full decorative tiles over kitchen platform.
3. Heavy section powder coated aluminium sliding windows with mosquito net in bedroom & living room.
4. Safety grills to all windows.
5. Decorative main door & safety door of reputed with godrej latch.
6. Good Quality curtains to window in living room & bedroom.

### ● **Plumbing :**

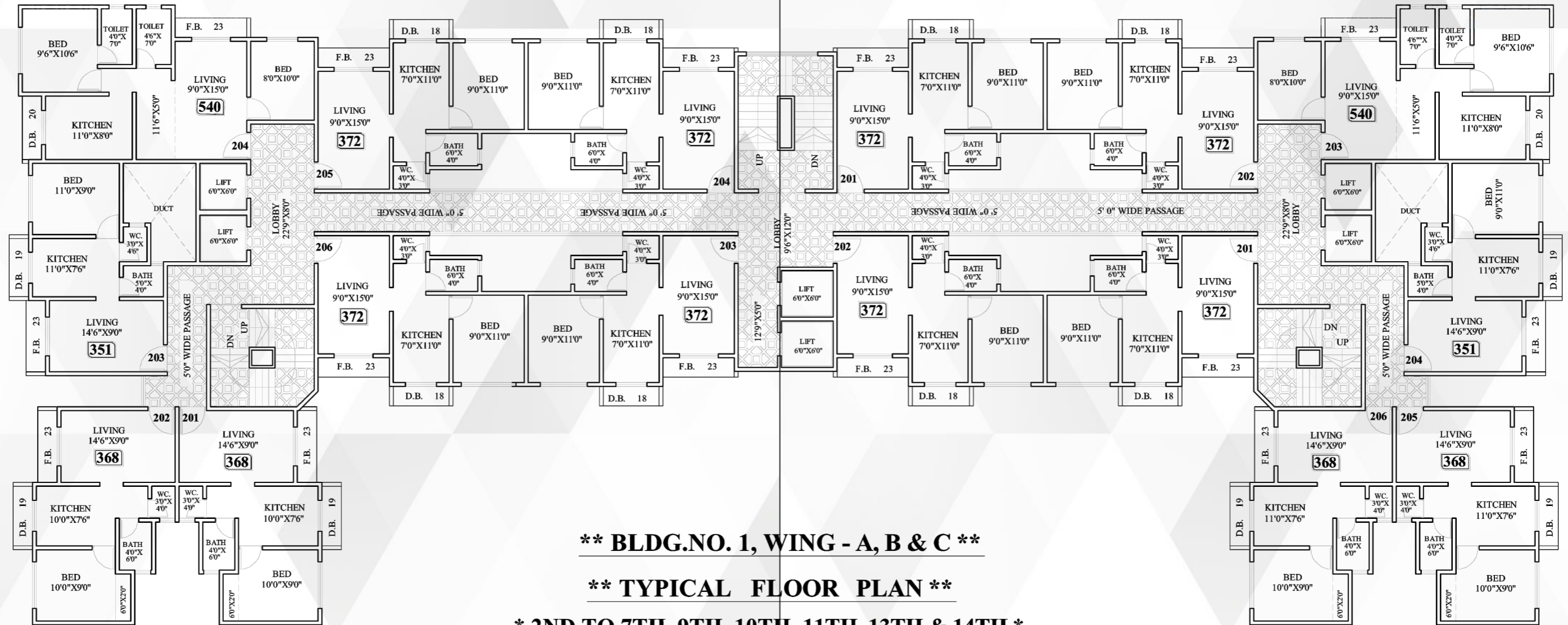
1. Concealed plumbing with pipe fitting.
2. 500 litre sintex Water tank over bathroom loft.
3. Full tiles in W.C. & bathrooms with reputed waterproof doors for all toilets, bathrooms.
4. Plumber company's plumbing fitting for all toilets, bathrooms & kitchen.
5. Cable point in living room & bedrooms with musical door bell for every flat.
3. Geyser point in toilet.

### ● **Paint:**

1. Cement Based putty for internal walls.
2. Gypsum coating to wall & attractive Asian Paint with royal play living room & bedroom.



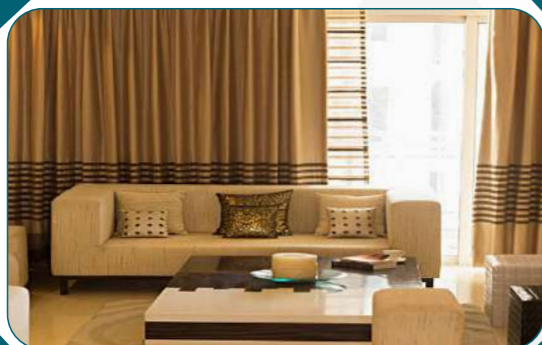
# Typical Floor Plan



**\*\* BLDG.NO. 1, WING - A, B & C \*\***

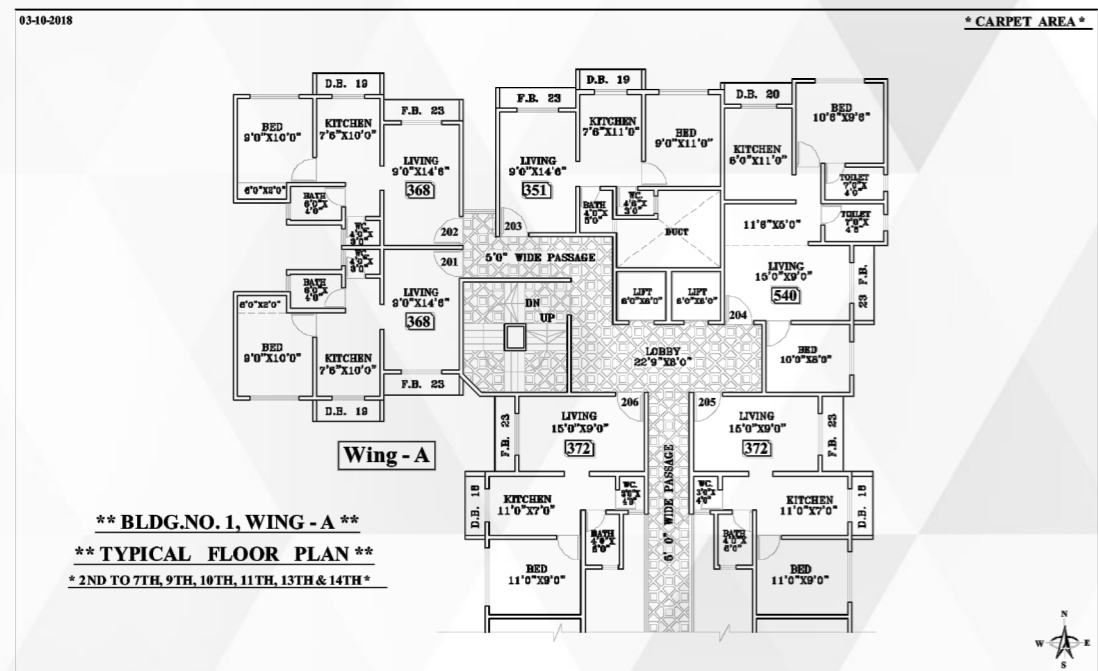
**\*\* TYPICAL FLOOR PLAN \*\***

**\* 2ND TO 7TH, 9TH, 10TH, 11TH, 13TH & 14TH \***





## A & C Wing Typical floor plan



## B - Wing Typical Floor Plan

